



## Warner Linear H-Track Actuators

More Power in Less Space



**Designed for use in extreme applications requiring high load capacity in a small footprint**

The H-Track provides the performance of hydraulics without the expansive space requirements nor the prohibitive cost of full-sized hydraulic systems.



The H-Track is a robust electric actuator solution with a force up to 4800 lbs (21350 N) and travel speeds near 4 inches (100 mm) per second. The H-Track family feature the smallest mounting envelope in their class with a patented valve and reservoir design that provides significant space savings compared to competitive models.

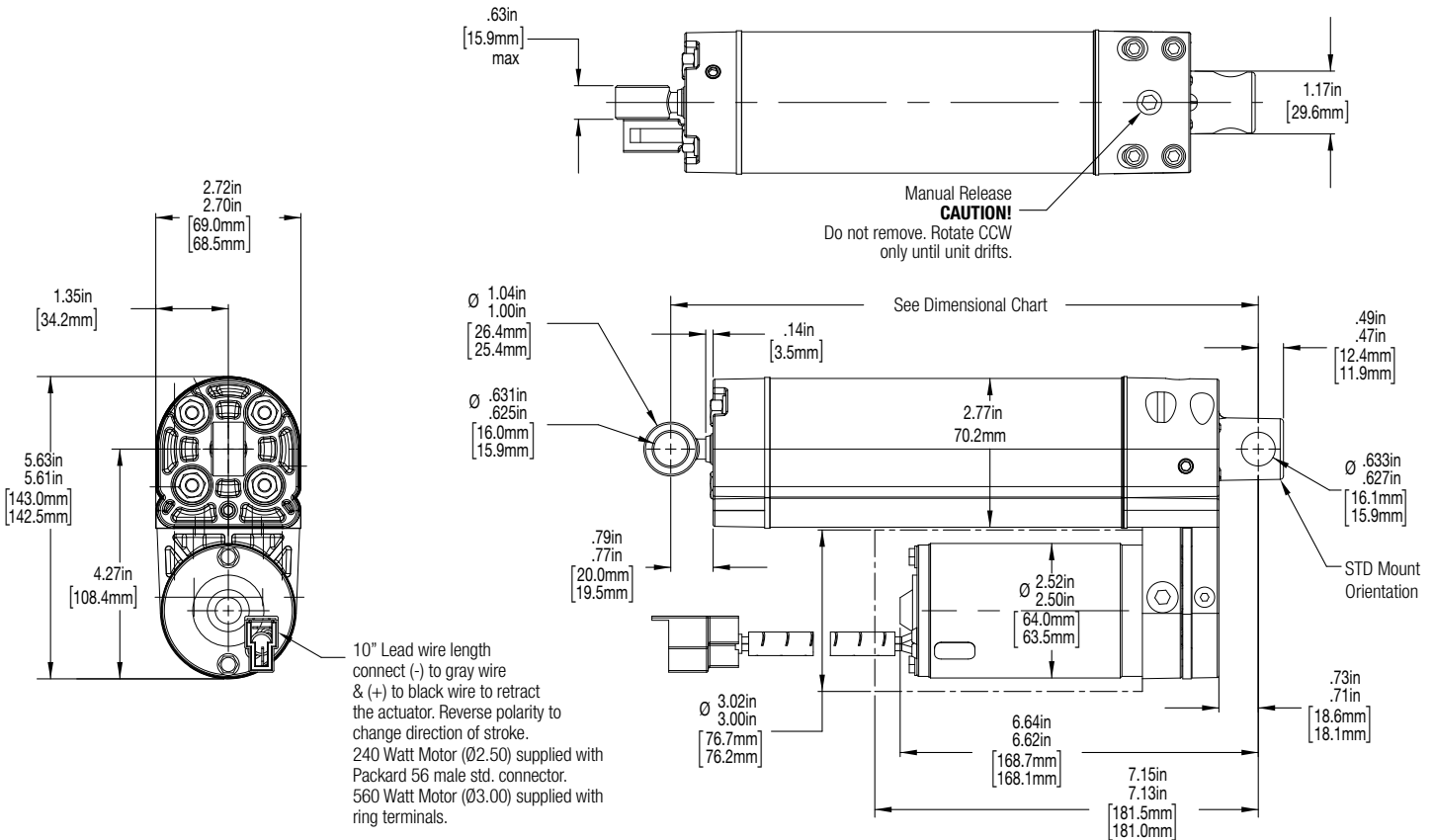


The completely sealed H-Track models are weather-proof, dust tight, corrosive resistant, and IP67 static (temporary submersion) and IP69K (high pressure wash-down) tested. The H-Track features three different hydraulic fluid options that allow the units to operate in temperatures as low as -40 °F (-40 °C) to as high as 180 °F (82 °C), making the H-Track an ideal option for use in demanding conditions. With stroke lengths up to 16 inches (406 mm), end switch options, and multiple configurations available, the H-Track is an exciting new addition to the actuator market.

**THOMSON**

*Linear Motion. Optimized.™*

## Specifications and Configurations



## H-Track Configurator

<b>H2</b>	<b>C</b>	<b>-</b>	<b>12</b>	<b>-</b>	<b>1</b>	<b>A2</b>	<b>2</b>	<b>-</b>	<b>A</b>	<b>-</b>	<b>06</b>	<b>R90</b>
<b>Bore</b>	<b>Metering</b>		<b>Operating</b>		<b>Motor</b>	<b>Pump</b>	<b>Rod Diameter**</b>		<b>Rod End</b>		<b>Stroke</b>	<b>Mount</b>
H1 - 1 H2 - 1.375 H3 - 1.5	C - *Meter out compression H - *Meter out extension B - Meter out both N - No meter out		12 - 12VDC 24 - 24VDC 48 - 48VDC		1 - 250 Watt 2 - 560 Watt	A1 - 16 - .125 A2 - *16 - .156 A3 - *16 - .188 A4 - *16 - .250 B1 - *12 - .125 B2 - *12 - .156 B3 - *12 - .188 B4 - 12 - .250	1 - .5 rod 1" bore only 2 - .625 rod 1.38" bore only 3 - .75 rod 1.5" bore only		A - Standard B - *Spherical C - *Male Thread D - *Female Thread		02 - *2" (50 mm) 04 - 4" (100 mm) 06 - 6" (150 mm) 08 - 8" (200 mm) 10 - *10" (254 mm) 12 - 12" (300 mm) 14 - 14" (356 mm) 16 - *16" (406 mm)	Blank - Standard R90 - *90° Position

\* These standard options may increase lead-time. Consult factory for current lead-times.  
 \*\* Other rod/bore combinations available. Contact factory for options.

### North and South America

Phone: 1-540-633-3549  
 E-mail: thomson@thomsonlinear.com

### Europe and Asia

Phone: +44 (0) 1271 334 500  
 E-mail: sales.europe@thomsonlinear.com

www.thomsonlinear.com

THOMSON-P-7854-WL-LETTER | 20190430TJ  
 Specifications are subject to change without notice. It is the responsibility of the product user to determine the suitability of this product for a specific application. All trademarks property of their respective owners. © 2019 Thomson Industries, Inc.



Linear Motion. Optimized.™